



# Wireless 3-Way Switch Installation and User Guide



## Features

The Wireless 3-Way Switch can operate independently or as a device you can control with your Control4® system. It can also be programmed as a 2-button keypad, similar to the Wireless 3-Button Keypad or Wireless 6-Button Keypad available from Control4. It installs in a standard wall box using typical wiring standards and communicates to the Control4 system using a wireless connection. This guide supports the following 3-way switch models:

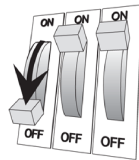
- Models:**
- LSZ-3W1-W Wireless 3-Way Switch (802.15.4)
  - LSZ-3W1-B Wireless 3-Way Switch (802.15.4)
  - LSZ-3W1-A Wireless 3-Way Switch (802.15.4)

**Communications:** IEEE 802.15.4, 2.4 GHz, 15-channel, spread spectrum radio

**WARNING!** To reduce the risk of serious injury or death, turn all power OFF before installing this product. Using this product in a manner other than outlined in this document voids your warranty. Further, Control4 is NOT liable for any damage incurred with the misuse of this product. See "Limited 1 Year Warranty". This product generates heat. The room must have adequate ventilation or heat dissipation ability.

## Installation Instructions

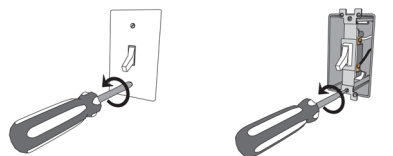
- 1** Ensure that the location and intended use meet the following criteria:
- Install in accordance with all national and local electrical codes.
  - The required wall box size is specified by the NEC (National Electrical Code). The internal wall box volume occupied by this 3-way switch is 5.0 cubic inches.
  - The range and performance of the wireless control system is highly dependent on the following: (1) Distance between devices; (2) Layout of the home; (3) Walls separating devices; and (4) Electrical equipment located near devices.
  - If installing a 3-way switch in a multi-gang installation, DO NOT continue until you have read the "Multi-Gang Installations" section.



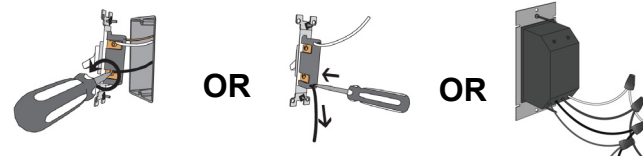
- 2** To avoid injury or death, turn OFF local electrical power. To turn off the power, either switch off the circuit breaker or remove the fuse from the fuse box. To ensure the wires do NOT have power running to them, use an inductive voltage detector.

**WARNING!** As with any electrical device, improper use or installation can cause SERIOUS INJURY or DEATH. It is important that you understand the particular wiring configuration of your installation before proceeding. Note: The wall box wiring shown in this document is an example. Your wire colors and functions may differ. If you are not sure which wires are the Hot, Neutral, or Load wires, have a trained electrician do the installation.

- 3** Use a screwdriver to remove the wall plate and existing switch from the wall.



- 4** Detach the existing switch or dimmer. The existing switch or dimmer is wired in one of three ways: terminal screws, back-wire, or wire nuts.



### Terminal Screws:

Use a screwdriver to unscrew the screws to release the wire.

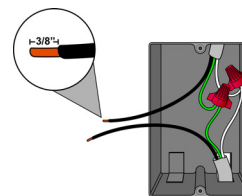
### Back-wire:

Insert screwdriver in Wire Release slot and pull out wire. If this does not work, use a wire cutter to cut the wire.

### Wire Nuts:

Turn to remove wire nuts from existing wiring.

- 5** Prepare each wire. Wire insulation should be stripped back 3/8 of an inch from the wire end (as shown).



**IMPORTANT!** The National Electrical Code (NEC) requires at least 6 inches of extended wire from the wall box. If your wiring does not meet this requirement, you will not meet code. Do NOT cut wire shorter than 6 inches.

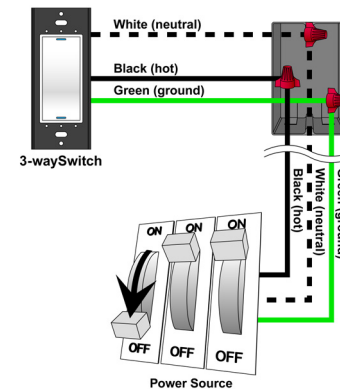
**IMPORTANT!** You may need to ground this product to the wall box when installing it in a commercial application or metal wall box.

- 6** Identify and connect the 3-way switch wires to the wall box wires using wire nuts.

Note: Wall box wires can differ depending upon how the box was wired by your electrician.

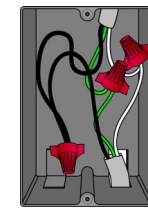
To wire the 3-way switch, connect and cap with a wire nut the wires indicated in the following table.

Wires from 3-way Switch	Wires from Wall Box
White (neutral)	White (neutral)
Green (ground)	Green (ground)
Black (hot)	Black (hot)



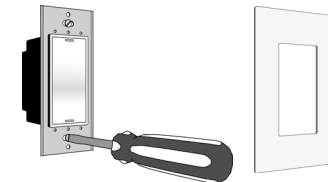
**Note:** For more information, refer to either the Control4 *Wireless Dimmer Installation and User Guide* or *Wireless Switch Installation and User Guide*.

- 7** Fit wires back into the wall box. Bend the wires in a zigzag pattern so that they easily fold into the wall box.



- 8** If you are using the Control4 push-on (screwless) wall plate that shipped with your 3-way switch:

- Align the 3-way switch to the wall box and fasten with screws. Tighten the screws until the back side of the metal yoke plate is even with the wall surface, but no farther. Overtightening can warp the 3-way switch and cause mechanical malfunction.
- With the wall plate's removal slot facing down, push the wall plate onto the dimmer's black plastic sub-plate.:

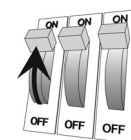


- 9** If you are using a Decora-style screw-on wall plate:

- Remove the 3-way switch's black plastic sub-plate and store it for future use (in case you later decide to use the Control4 wall plate).
- Align the 3-way switch to the wall box and fasten with screws.
- Fasten the wall plate to the 3-way switch with screws.

- 10** Turn ON power at the circuit breaker or replace fuse from fuse box.

- 11** Test the 3-way switch to see if it is working properly. See "Operation and Configuration" for specific instructions.



## Troubleshooting

If light does not turn on:

- Ensure light bulb is not burned out and is screwed in tightly.
- Ensure circuit breaker is not turned OFF or tripped.
- Check for proper wiring, such as the example in step 6. You may also need to refer to these resources:
  - Control4 *Wireless Dimmer Installation and User Guide*
  - Control4 *Wireless Switch Installation and User Guide*
  - A trained electrician
- For help on the installation or operation of this product, email or call the Control4 Technical Support Center. Please provide your exact model number. Contact support@control4.com or see the web site www.control4.com.

## Limited 1 Year Warranty

This device has a limited one (1) year warranty on parts from the date of purchase. Control4 will replace or repair any defective unit. Return unit to the place of purchase for replacement. For any damages incurred, the warranty will never exceed the purchase price of the device. This warranty does not cover installation, removal, or reinstallation cost. The warranty is not valid in cases where damage was incurred due to misuse, abuse, incorrect repair, or improper wiring or installation. It does not cover incidental or consequential damage. This warranty gives you specific legal rights, and you might also be entitled to other rights that vary from state to state. Some states do not allow limitations on how long an implied warranty lasts or the exclusion or limitation of incidental or consequential damages. In these cases, the above mentioned limitations might not apply to you. For complete warranty information, see www.control4.com. To automatically receive notification of upgrades, return the enclosed registration card or register online at www.control4.com.

## Multi-Gang Installations

Control4 offers wall plates in 2-gang, 3-gang, and 4-gang configurations. If your installation requires one of these or another multi-gang wall plate, then:

**If using a Control4 push-on (screwless) multi-gang wall plate:**

- Remove the individual black plastic sub-plate from each device and replace them with the multi-gang sub-plate that shipped with your Control4 multi-gang wall plate. Use of the multi-gang subplate inherently aligns and spaces each device properly.
- For ease of installation, each device's yoke plate must be even and aligned in a flat plane so that the multi-gang subplate can sit flat against all of the devices. This can be accomplished by initially not screwing the devices tightly against the wall box, leaving about a 1/8 inch gap between the wall and the yoke plates. This allows each device to move and conform to the sub-plate. Using the new screws supplied with the multi-gang wall plate, secure the multi-gang wall plate to all devices to create, in a sense, a single sub-plate structure. Then secure the "sub-plate structure" by tightening the wall box screws the remaining 1/8 inch. Do not over-tighten any of the screws or you will distort the flat plane of the multi-gang wall plate, making it difficult to install to the subplate correctly.

**If using a Decora-style screw-on multi-gang wall plate:** Remove the black plastic subplate from each device, just as you would for a single device, and store it for future use in case you later decide to use the Control4 wall plate.

**If your multi-gang installation requires a mixture of Decora-style and traditional-style wall plates** for switches, dimmers, or keypads, look for modular wall-plate solutions in your local hardware store.

## FCC and UL Information

FCC ID: R33KPZ6B1

This device complies with Part 15 of the FCC Rules. Operation is subject to the following two conditions: (1) this device may not cause harmful interference, and (2) this device must accept any interference received, including interference that may cause undesired operation.

This equipment has been tested and found to comply with the limits for a Class B digital device, pursuant to Part 15 of the FCC Rules. These limits are designed to provide reasonable protection against harmful interference in a residential installation. This equipment generates, uses, and can radiate radio frequency energy and, if not installed and used in accordance with the instructions, may cause harmful interference to radio communications. However, there is no guarantee that interference will not occur in a particular installation. If this equipment does cause harmful interference to radio or television reception, which can be determined by turning the equipment off and on, the user is encouraged to try to correct the interference by one or more of the following measures:

- Reorient or relocate the receiving antenna.
- Increase the separation between the equipment and receiver.
- Connect the equipment into an outlet on a circuit different from that to which the receiver is connected.
- Consult the dealer or an experienced radio/TV technician for help.

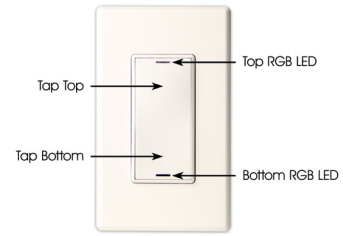
**CAUTION!** Changes or modifications not expressly approved by Control4 could void the user's authority to operate the equipment.

UL Control number: xxxx (Not yet approved)

---

## Operation and Configuration

On initial power up, the unit will flash the Red/Green/Blue (RGB) Light Emitting Diodes (LEDs), which can be programmed with different colors for different states or color preferences). To set up this 3-way switch for use with a Control4 system, refer to the documentation that shipped with your controller.



To operate and configure this 3-way switch as a stand-alone device, refer to the following table.

Operate 3-Way Switch	Expected behavior of RGB LEDs:	
<b>To operate 3-way switch:</b>	<b>Top</b>	<b>Bottom</b>
Turn ON: Tap top.	Lit, full brightness	Not lit
Turn OFF: Tap bottom.	Not lit	Lit, full brightness
<b>Care and Cleaning</b>		
Do NOT paint 3-way switch or its wall plate. Do NOT use any chemical cleaners to clean the 3-way switch. Clean surface with a soft damp cloth as needed.		

---

## About this Document

United States Patents Pending. Copyright © 2004-2005 Control4 Corporation. Control4 and the Control4 logo are registered trademarks of Control4 Corporation. All trademarks are properties of their respective owners.

Part Number: 21-0030-02 Rev A Draft 6.